



**TIDEWATER
CANADA**

ISLAND TRADER



The *Island Trader* is a double hulled, IMO compliant, Class A OPA 90 oil tank barge having an aggregate capacity of 65,000 barrels at 90% carried in twelve separate cargo tanks.

Designed as a dedicated Articulated Tug Barge Unit, the barge achieves speeds of 11 knots full loaded and is capable of pushing in sea conditions up to 12 metres.

REGISTRATION

Vessel Type: Oil Tank Barge
Rebuilt: 2003
Builder: Jinling Shipyard Nanjing China
Hull: Double Hulled
Official Number: 822069
IMO Number: 8645894
Flag: Canada
Owner: Tidewater Transportation Canada, Inc.
Port of Registry: Vancouver, BC
Gross Tonnage: 5320 t
Net Registered Tonnage: 2910 t
Dead Weight Tonnage: 9250 t

CLASSIFICATION

Transport Canada Class A Oil Barge,
 Arctic Class A1
 American Bureau of Shipping
 A1 Oil Tank Barge

DIMENSIONS | CAPACITIES

Length, overall: 112.4 m / 368.7'
Breadth, moulded: 21 m / 68.9'
Depth, moulded: 9.6 m / 31.5'
Lightship Displacement: 2790.47 t
Lightship Draft: 2.416 m / 7.9'
Lightship Air Draft: 19.52 m / 64'
Full Load Displacement: 11825.71 t

Full Load Draft: 6.402 m / 21'

Full Load Air Draft: 15.342 m / 50.3'

Oil Tank Capacity: 10500 m³ @ 95%

Cargo Tanks: 12

Bow to Center of Manifold: 63m

PUMPS

4 Goulds Centrifugal, 600m³/hr

MAIN MACHINERY

Bow Thruster: Schottel SPJ 132, 800 hp, 360 degree

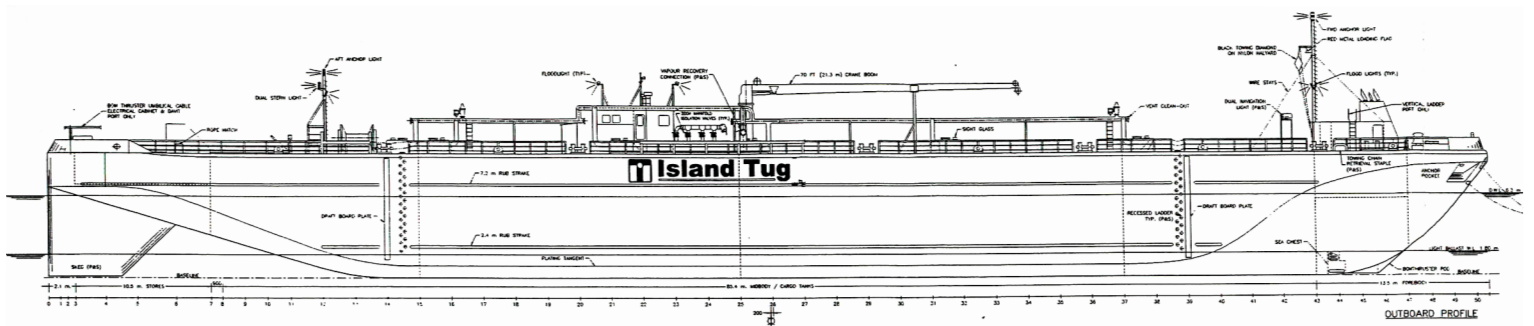
SPECIAL FEATURES

- Double Hulled OPA 90 compliant
- Tank Radar remote monitoring and ullaging system connected to central cargo management computer - Saab
- Centralized control and monitoring with all barge functions remote operated
- Rising Stick fill indicators
- Alarmed overfill protection - Saab
- Alarmed over-pressure protection - Saab
- Closed Loading
- Vapour Recovery Vent System 7
- Quality Control Lab
- Articulated Pin Style Pushing System by Intercon
- Ice Classed and strengthened for use in Arctic Class A1
- Lock and canal compliant
- Coated cargo tanks for chemical carriage

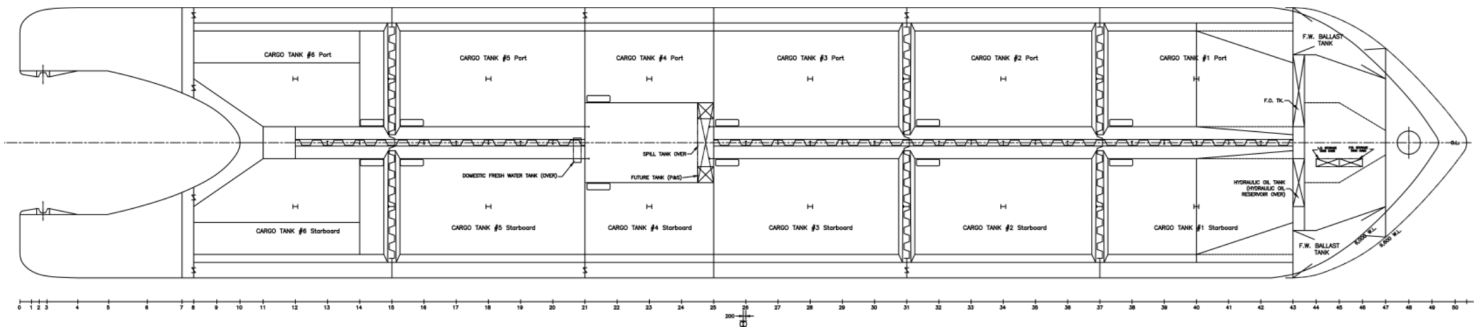
TIDEWATER CANADA

Telephone: 604-873-4312 · info@ca.tidewater.com · TidewaterCanada.ca





OUTBOARD PROFILE



BELOW MAIN DECK**

* Reference Drawing No.: Peter S. Hatfield LTD, Vancouver, B.C., Canada; 021000-1, No. 958-1.

** Reference Drawing No.: Dixon Naval Architects LTD, West Vancouver, B.C., Canada; 021000-4, No. 958-4.

